



US010754236B2

(12) **United States Patent**
Chang et al.

(10) **Patent No.:** **US 10,754,236 B2**

(45) **Date of Patent:** **Aug. 25, 2020**

(54) **ILLUMINATION SYSTEM WITH HIGH INTENSITY PROJECTION MECHANISM AND METHOD OF OPERATION THEREOF**

(58) **Field of Classification Search**
CPC .. G03B 21/204; G03B 21/208; G03B 21/008; G03B 21/16

See application file for complete search history.

(71) Applicant: **Optonomus Technologies Inc.**,
Agoura Hills, CA (US)

(56) **References Cited**

(72) Inventors: **Yung Peng Chang**, Hsinchu (TW);
Alan Wang, Taichung (TW); **Kirk Huang**, Taichung (TW); **Mark Chang**, Taichung (TW); **Lion Wang**, Hsinchu (TW); **Andy Chen**, Taichung (TW); **Kenneth Li**, Agoura Hills, CA (US)

U.S. PATENT DOCUMENTS

8,317,331 B2	11/2012	Li
8,562,141 B2	10/2013	Ogino
8,894,241 B2	11/2014	Kitano
9,170,475 B2	10/2015	Maes et al.
10,066,809 B2	9/2018	Takahira et al.
10,104,352 B2	10/2018	Kato
2013/0088471 A1	4/2013	Kitano
2013/0182452 A1	7/2013	Takahira et al.
2019/0204528 A1	7/2019	Oshima et al.
2019/0206851 A1	7/2019	Takeya et al.

(73) Assignee: **Optonomus Technologies, Inc.**,
Agoura Hills, CA (US)

(*) Notice: Subject to any disclaimer, the term of this patent is extended or adjusted under 35 U.S.C. 154(b) by 0 days.

OTHER PUBLICATIONS

“PCT Search Report/Written Opinion for parent PCT/US2019/041389 application, dated Oct. 7, 2019, 15 pages.”

(21) Appl. No.: **16/509,196**

Primary Examiner — Joseph L Williams

(22) Filed: **Jul. 11, 2019**

(74) *Attorney, Agent, or Firm* — Charles A. Lemaire; Jonathan M. Rixen; Lemaire Patent Law Firm, P.L.L.C.

(65) **Prior Publication Data**

US 2020/0026170 A1 Jan. 23, 2020

Related U.S. Application Data

(60) Provisional application No. 62/764,087, filed on Jul. 18, 2018.

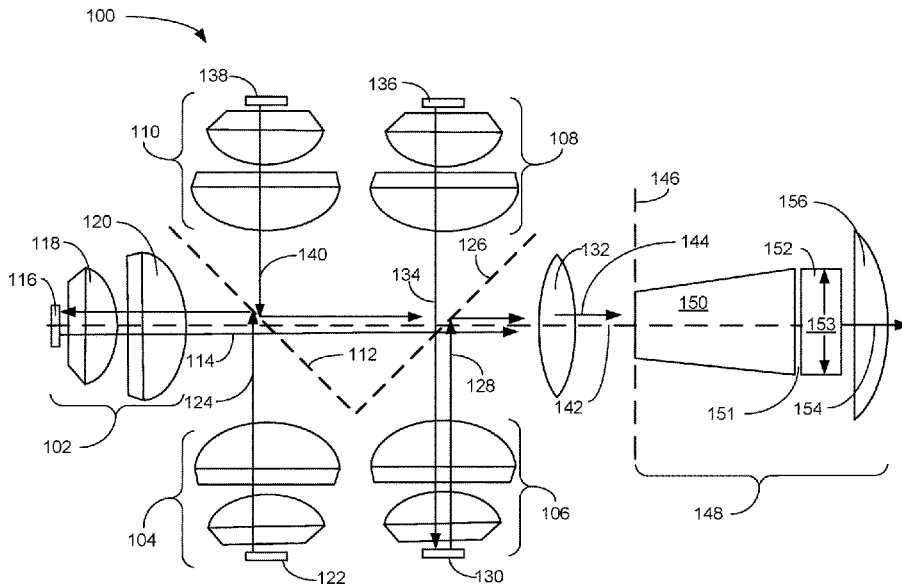
(57) **ABSTRACT**

An illumination system includes an input device configured to generate a first luminescent light beam; a pumping assembly, optically coupled to the input device, configured to project a pumping light beam into the input device; a focusing lens, aligned with the first luminescent light beam, to focus the first luminescent light beam enhanced by the pumping light beam as an output beam; and an output device, optically coupled to the focusing lens, configured to: receive the output beam from the focusing lens, and project an application output, formed with the output beam, from a projection device.

(51) **Int. Cl.**
G03B 21/20 (2006.01)
G03B 21/00 (2006.01)
G03B 21/16 (2006.01)

(52) **U.S. Cl.**
CPC **G03B 21/204** (2013.01); **G03B 21/008** (2013.01); **G03B 21/16** (2013.01); **G03B 21/208** (2013.01); **G03B 21/2066** (2013.01)

27 Claims, 6 Drawing Sheets



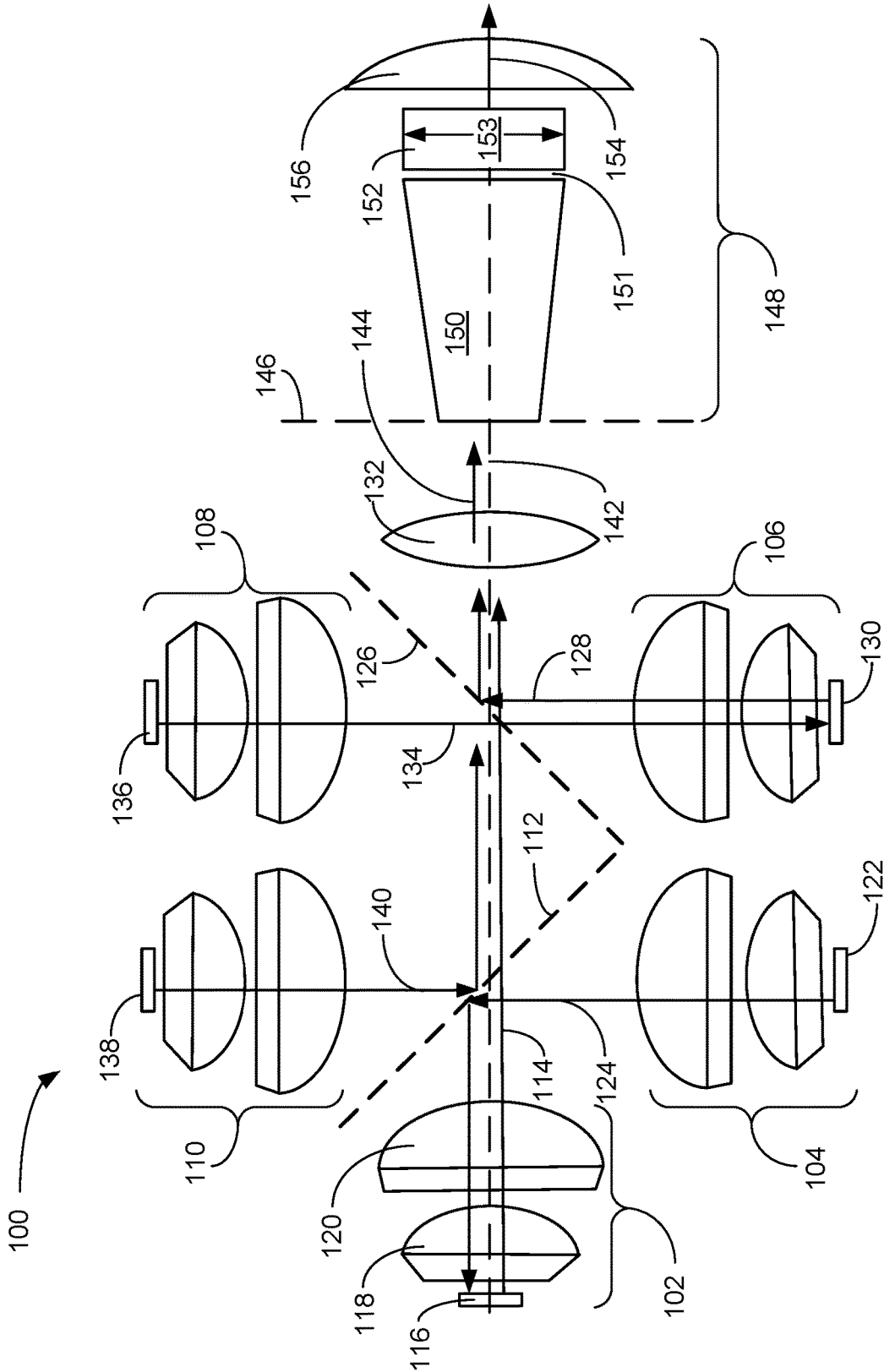


FIG. 1

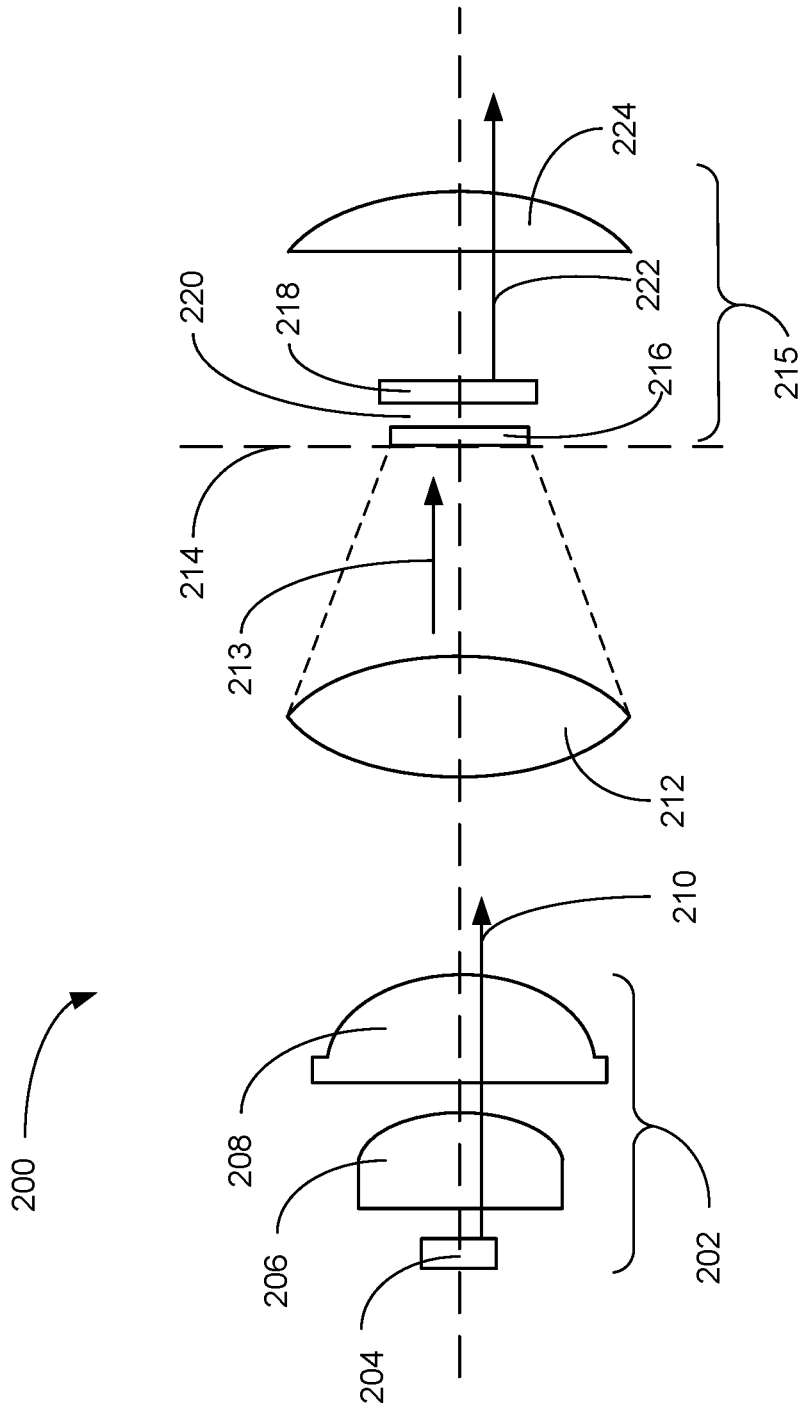


FIG. 2

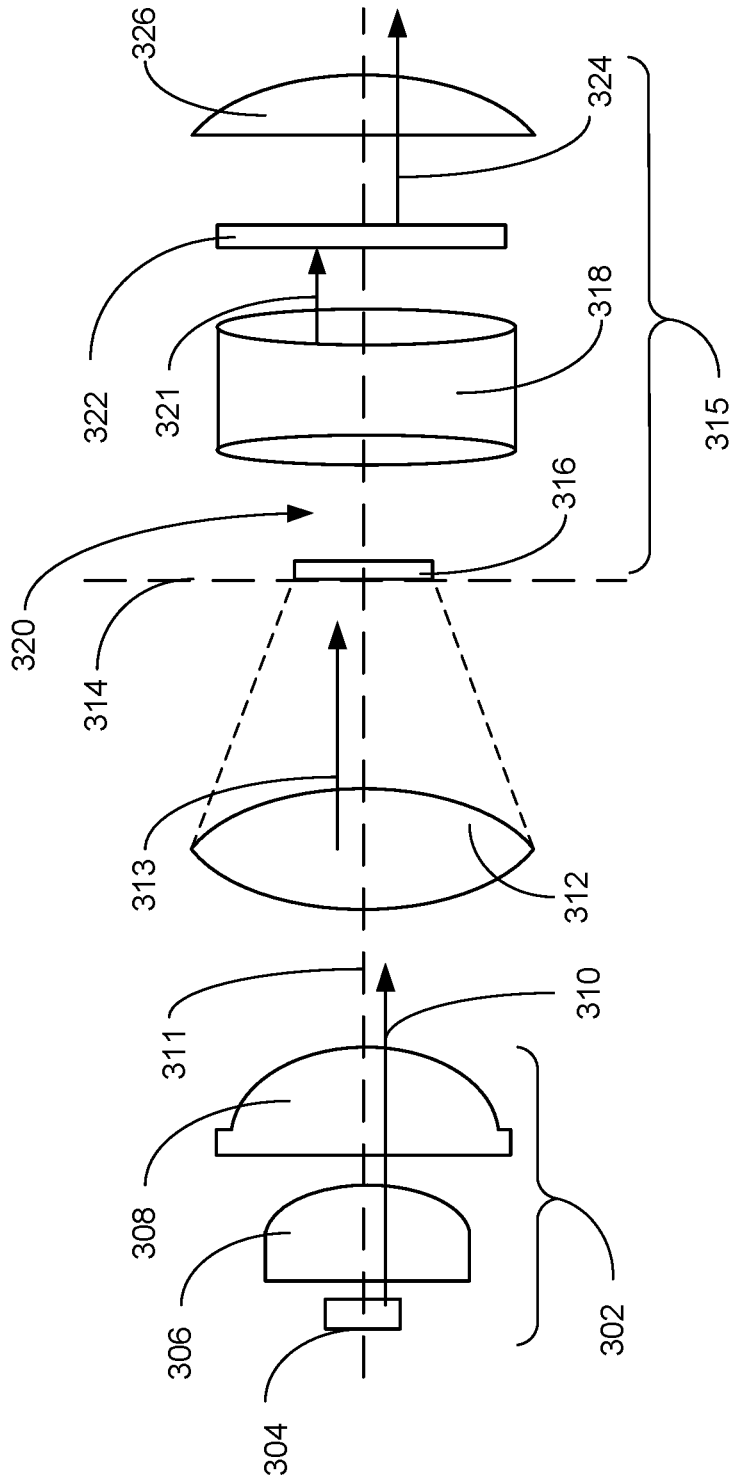


FIG. 3

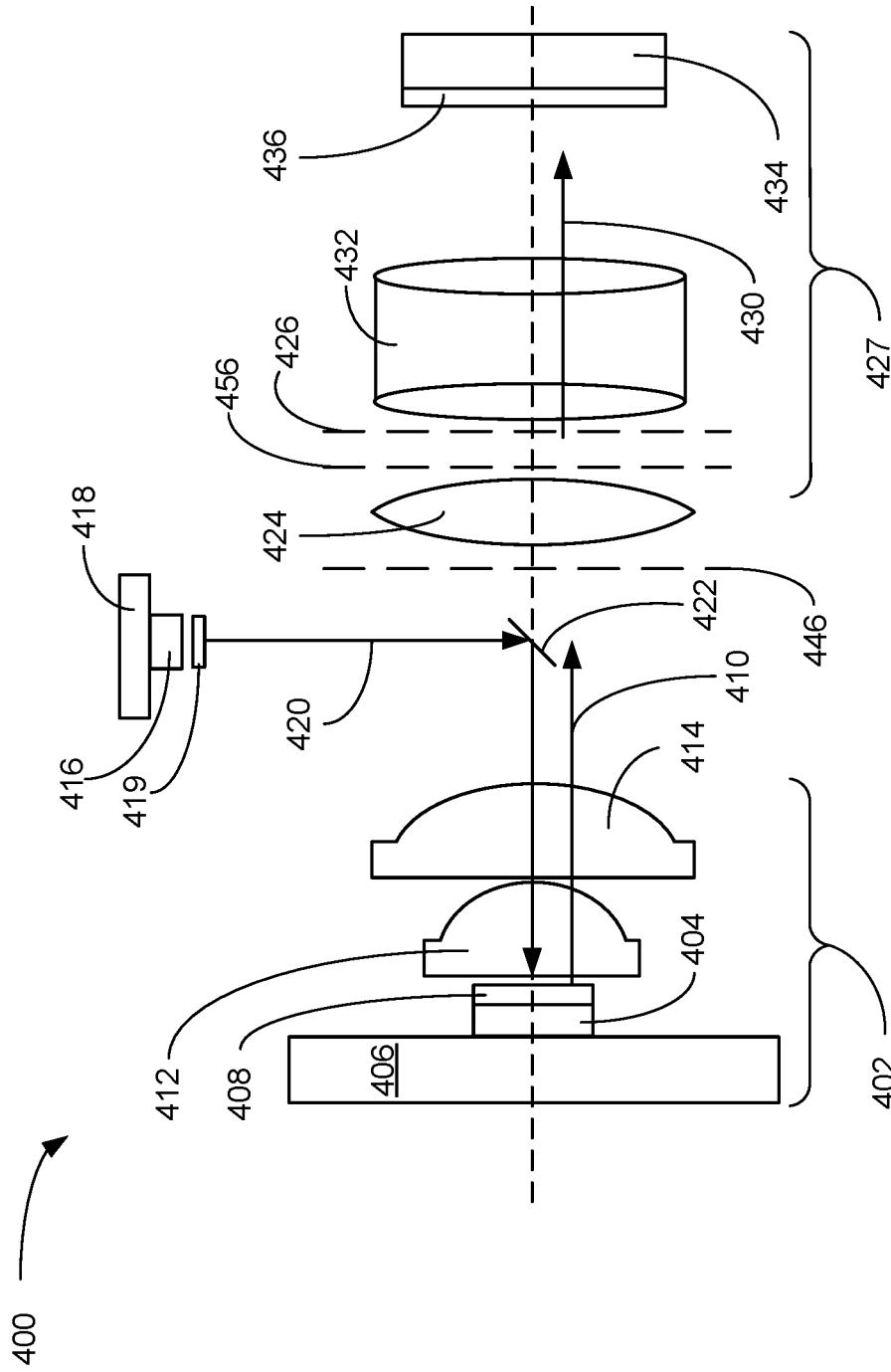


FIG. 4

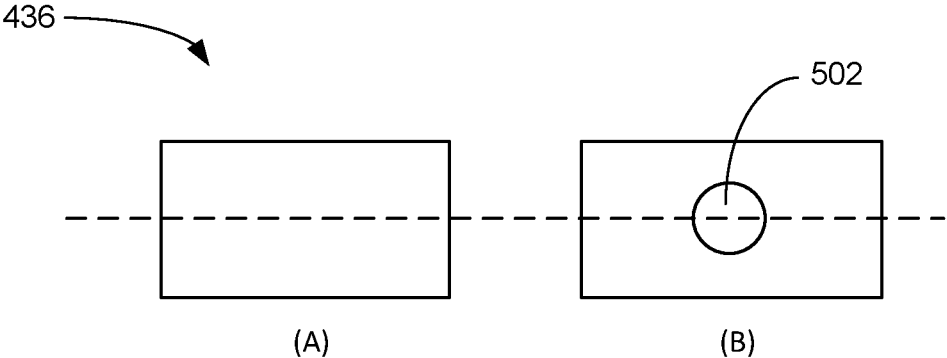


FIG. 5

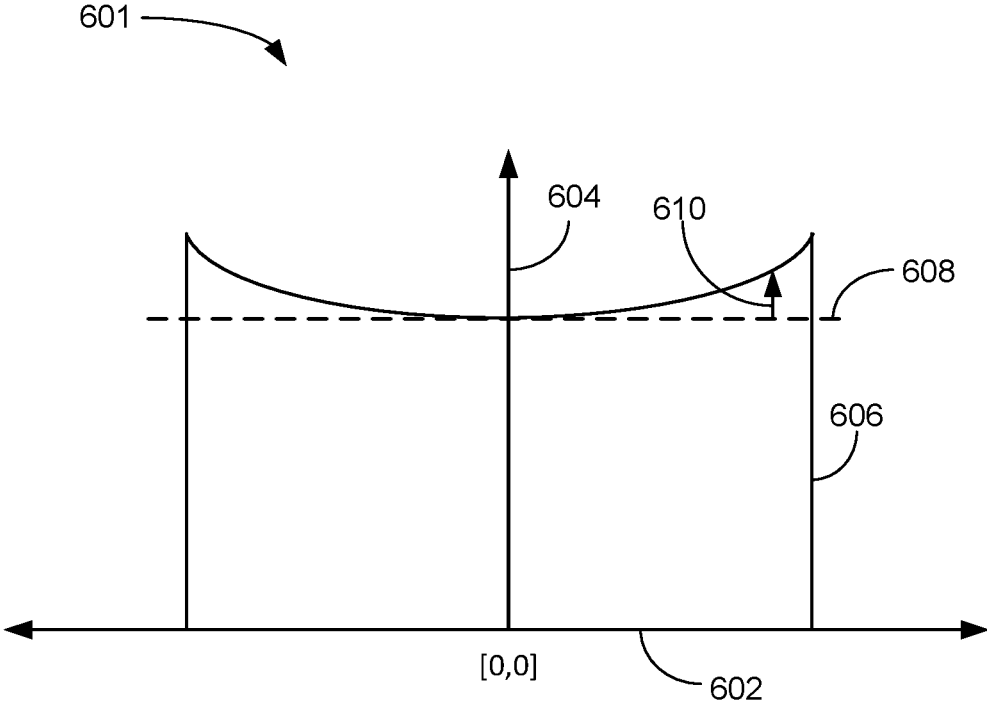


FIG. 6

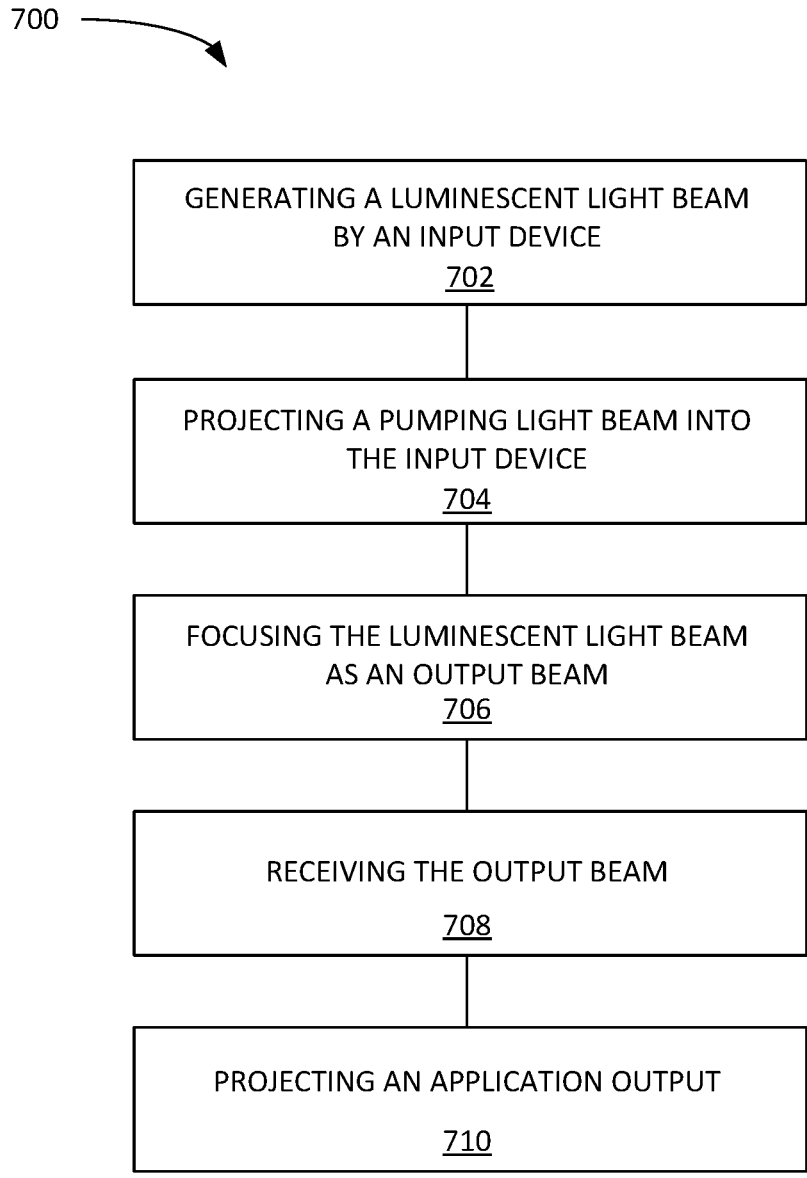


FIG. 7

1

ILLUMINATION SYSTEM WITH HIGH INTENSITY PROJECTION MECHANISM AND METHOD OF OPERATION THEREOF

CROSS-REFERENCE TO RELATED APPLICATION

This application claims the benefit of U.S. Provisional Patent Application Ser. No. 62/764,087 filed Jul. 18, 2018, and the subject matter thereof is incorporated herein by reference thereto.

TECHNICAL FIELD

An embodiment of the present invention relates generally to an illumination system, and more particularly to a high intensity light projection system.

BACKGROUND

Projection systems include digital projectors, spotlights, “goes between optics” (GOBO) projectors, and other systems having light beams with various divergences and intensities. Traditional systems use various lamps such as incandescent, halogen, metal halide, xenon, etc. lamps selected for certain required performance. A common issue among the various light sources is the trade-off between output brightness and lamp lifetime. LEDs with long lifetimes have been used in many applications, but with less than desirable brightness. The problem of delivering high intensity light from a system that also provides long life of usage has yet to be solved.

Thus, a need still remains for an illumination system with high intensity projection mechanism to provide improved light generation, reliability, and flexibility. In view of the ever-increasing commercial competitive pressures, along with growing consumer expectations and the diminishing opportunities for meaningful product differentiation in the marketplace, it is increasingly critical that answers be found to these problems. Additionally, the need to reduce costs, improve efficiencies and performance, and meet competitive pressures adds an even greater urgency to the critical necessity for finding answers to these problems.

Solutions to these problems have been long sought but prior developments have not taught or suggested any solutions and, thus, solutions to these problems have long eluded those skilled in the art.

SUMMARY

An embodiment of the present invention provides an apparatus, and an illumination system, including: an input device configured to generate a first luminescent light beam; a pumping assembly, optically coupled to the input device, configured to project a pumping light beam into the input device; a focusing lens, aligned with the first luminescent light beam, to focus the first luminescent light beam enhanced by the pumping light beam as an output beam; and an output device, optically coupled to the focusing lens, configured to: receive the output beam from the focusing lens, and project an application output, formed with the output beam, from a projection device.

An embodiment of the present invention provides a method that includes generating a luminescent light beam by an input device; projecting a pumping light beam into the input device; focusing the first luminescent light beam enhanced by the pumping light beam as an output beam;

2

receiving the output beam by an output device; and projecting an application output, formed with the output beam, from a projection device.

Certain embodiments of the invention have other steps or elements in addition to or in place of those mentioned above. The steps or elements will become apparent to those skilled in the art from a reading of the following detailed description when taken with reference to the accompanying drawings.

BRIEF DESCRIPTION OF THE DRAWINGS

FIG. 1 is an example of a functional block diagram of an illumination system with high intensity output mechanism in an embodiment of the present invention.

FIG. 2 is an example of a functional block diagram of an illumination system with high intensity output mechanism in an alternative embodiment.

FIG. 3 is an example of a functional block diagram of an illumination system in an alternative embodiment.

FIG. 4 is an example of a functional block diagram of an illumination system in an alternative embodiment.

FIG. 5 is an example of the image of the projected light beam as seen on the digital micromirror device (DMD) of FIG. 4.

FIG. 6 is an example of an intensity distribution of the output beam of FIG. 1.

FIG. 7 is a flow chart of a method of operation of an illumination system in an embodiment of the present invention.

DETAILED DESCRIPTION

The following embodiments are described in sufficient detail to enable those skilled in the art to make and use the invention. It is to be understood that other embodiments would be evident based on the present disclosure, and that system, process, or mechanical changes may be made without departing from the scope of an embodiment of the present invention.

In the following description, numerous specific details are given to provide a thorough understanding of the invention. However, it will be apparent that the invention may be practiced without these specific details. In order to avoid obscuring an embodiment of the present invention, some well-known circuits, system configurations, and process steps are not disclosed in detail.

The drawings showing embodiments of the system are semi-diagrammatic, and not to scale and, particularly, some of the dimensions are for the clarity of presentation and are shown exaggerated in the drawing figures. Similarly, although the views in the drawings for ease of description generally show similar orientations, this depiction in the figures is arbitrary for the most part. Generally, the invention can be operated in any orientation.

The term “adjacent” referred to herein can be defined as two elements in close proximity to each other. The terms “on” and “abut” referred to herein can be defined as two elements in physical contact with no intervening elements. The term “pump”, “pumped”, or “pumping” referred to herein can be defined as adding energy to a first light source from a secondary light source to increase the brightness of the first light source.

Referring now to FIG. 1, therein is shown an example of a functional block diagram of an illumination system 100 with high intensity projection mechanism in one embodiment of the present invention. The illumination system 100 is depicted as a first input device 102, such as a red light

assembly, enhanced by a first pumping assembly **104** that can be optically coupled to the first input device **102**. A second input device **106**, such as a green light assembly, enhanced by a second pumping assembly **108** that can be optically coupled to the second input device **106**. A third input device **110**, such as a blue light assembly, can be optically coupled to a blue reflecting filter **112**.

The first input device **102** can be a hardware structure configured to source a first luminescent light beam **114**, such as a red luminescent light beam. The first input device **102** includes a first light source **116**, such as a laser red phosphor light source or red phosphor light emitting diode (LED) light source, that can be optically coupled to a coupling lens **118** that feeds a collimating lens **120**. The first pumping assembly **104** can include a first pumping light source **122**, such as a blue laser light source or a blue light emitting diode (LED). The first pumping light source **122**, that can be optically coupled to an additional set of the coupling lens **118** that feeds the collimating lens **120**. A first pumping light beam **124** can be projected into the blue reflecting filter **112** in order to be reflected into the first input device **102**. The first pumping light beam **124** can pass through the collimating lens **120** and the coupling lens **118** in order to pump the first light source **116**. The addition of the energy from the first pumping light beam **124** can increase the intensity of the first luminescent light beam **114**.

The blue reflecting filter **112** can include a glass plate, plastic or film coated with a dichroic film to reflect the blue color of the first pumping light beam **124** and the third input device **110**, such as a blue light assembly while, allowing the first luminescent light beam **114**, such as the red luminescent light beam, to pass unaffected. A green reflective filter **126** can be positioned adjacent and perpendicular to the blue reflecting filter **112**. The green reflective filter **126** can include a glass plate, plastic or film coated with a dichroic film to reflect the green color of a second luminescent light beam **128** sourced from the second input device **106**.

The second input device **106** can include a second light source **130**, such as a green light source, that can be optically coupled to another set of the coupling lens **118** that feeds the collimating lens **120**. The second light source **130** can be a laser green phosphor light source or a green phosphor light emitting diode (LED) for producing the second luminescent light beam **128**. The second luminescent light beam **128** can reflect from the green reflective filter **126** in order to change direction toward a focusing lens **132**. The focusing lens **132** can be formed of glass, plastic, quartz, polysilicon glass, or the like for converging the incident light from the first input device **102**, the second input device **106**, and the third input device **110**. The second light source **130** can receive a second pumping light beam **134** from a second pumping light source **136**. The second pumping light source **136** can be optically coupled to another set of the coupling lens **118** that feeds the collimating lens **120**. The second pumping light beam **134** can be a light beam that can pass through the green reflective filter **126** with no affect. The second pumping light beam **134** can enter the second input device **106** and illuminate the second light source **130** in order to increase the brightness of the second luminescent light beam **128**.

The second pumping light source **136** can be a blue laser light source or a blue phosphor LED capable of producing the second pumping light beam **134** for pumping the second light source **130**. The third input device **110** can include the third light source **116**, such as a laser blue phosphor light source or blue phosphor light emitting diode (LED) light source, that can be optically coupled to another set of the coupling lens **118** that feeds the collimating lens **120**. To

produce a third luminescent light beam **140**, such as a blue luminescent light beam. The third luminescent light beam **140** can be reflected by the blue reflecting filter **112** to follow an optical centerline **142**. The first luminescent light beam **114**, the second luminescent light beam **128**, the third luminescent light beam **140**, or a combination thereof can converge, along the optical centerline **142**, on the focusing lens **132**.

It is understood that the convergence of the first luminescent light beam **114**, the second luminescent light beam **128**, and the third luminescent light beam **140** on the focusing lens **132** can form an output beam **144** that is focused at an output plane **146**. An output device **148** can be positioned at the output plane **146** with a size of the output beam **144** matching an input of a light pipe **150**. The light pipe **150** can be a CPC, formed as a conical solid or hollow cone with a reflective coating. The light pipe **150** can be made of acrylic or polycarbonate plastic, glass, polysilicon glass, quartz, or the like. The narrow end of the conical solid shown as the light pipe **150** can match the size of the output beam **144** at the output plane **146**. The larger side of the light pipe **150** can border an air gap **151** between the light pipe **150** and a "goes before optics" (GOBO) **152** for applying the output beam **144** with an even distribution. The GOBO **152** can have an application size **153**. The GOBO **152** can be a sheet, a wheel, a box, or a combination thereof having cutout patterns to pass a portion of the output beam **144** as an application output **154**, such as a GOBO output or a patterned multi-colored display. The GOBO output **154** can be magnified by a projection device **156** for displaying the GOBO output **154** on a screen or surface (not shown). It is understood that the conical shape of the light pipe **150** can be reversed when smaller versions of the GOBO **152** are used.

It has been discovered that the illumination system **100** can provide a flexible and compact GOBO projection system for use in entertainment venues, holiday presentations, or background displays. The combination of the first luminescent light beam **114**, the second luminescent light beam **128**, and the third luminescent light beam **140** can be achieved with the blue reflecting filter **112**, the green reflective filter **126**, and the focusing lens **132**. The additional pumping of the first pumping assembly **104** and the second pumping light source **136** can enhance the brightness and the distribution of the GOBO output **154**.

Referring now to FIG. 2, therein is shown an example of a functional block diagram of an illumination system **200** in an alternative embodiment. The functional block diagram of the illumination system **200** depicts an input device **202** including a light source **204**, such as a laser phosphor light source or phosphor light emitting diode (LED) light source. The light source **204** can be optically coupled to a coupling lens **206** and a collimating lens **208** for creating a high intensity light beam **210**. The coupling lens **206** and the collimating lens **208** can be fabricated from glass, plastic, quartz, silicon glass, or the like. The coupling lens **206** can receive the output of the light source **204** and evenly distribute the output of the light source **204** for optically coupling the collimating lens **208**. The collimating lens **208** can form the high intensity light beam **210** by reflecting all of the light rays from the coupling lens **206** to be parallel.

A focusing lens **212** can be formed of glass, plastic, quartz, polysilicon glass, or the like, for converging the incident light from the collimating lens **208**. The focusing lens **212** can have a fixed focal length that terminates at an output plane **214**. The focusing lens **212** can produce a focused light beam **213** at the output plane **214**. An output

device **215** can be optically coupled to the focusing lens **212**. The output device **215** includes a diffuser **216** that can be formed of a sheet, plastic, glass or a combination thereof. The diffuser **216** can be in the form of a wafer, a disc, a sheet, or a rectangular solid. The diffuser **216** can evenly disburse the focused light beam **213** across its area. A “goes before optics” (GOBO) **218** can be spaced away from the diffuser **216**, by a gap **220**, to receive an image of the focused light beam **213** that was homogenized by the diffuser **216**. The GOBO **218** can be a sheet, a wheel, a box, or a combination thereof having cutout patterns to pass a portion of the focused light beam **213** as a GOBO output **222**, such as a patterned high intensity light. The GOBO output **222** can be optically coupled to a projection lens **224** for display of the GOBO output **222** on a screen or surface (not shown).

It has been discovered that the illumination system **200** can provide a single color of the GOBO output **222** in a very small space. By way of an example, the gap between the diffuser **216** and the GOBO can be in the range of eight to ten millimeters and the entire illumination system **200** can be in the range of ten centimeters to 13 centimeters.

Referring now to FIG. 3, therein is shown an example of a functional block diagram of an illumination system **300** in an alternative embodiment. The functional block diagram of the illumination system **300** depicts an input device **302** including a light source **304**, such as a laser phosphor light source or phosphor light emitting diode (LED) light source.

The light source **304** can be optically coupled to a coupling lens **306** and a collimating lens **308** for creating a high intensity light beam **310**. The coupling lens **306** and the collimating lens **308** can be fabricated from glass, plastic, quartz, silicon glass, or the like. The coupling lens **306** can receive the output of the light source **304** and evenly distribute the output of the light source **304** for optically coupling the collimating lens **308**. The collimating lens **308** can form the high intensity light beam **310** by reflecting all of the light rays from the coupling lens **306** to be parallel to an optical centerline **311**.

A focusing lens **312** can be formed of glass, plastic, quartz, polysilicon glass, or the like, for converging the incident light from the collimating lens **308**. The focusing lens **312** can have a fixed focal length that terminates at an output plane **314**. The focusing lens **312** can produce a focused light beam **313** at the output plane **314**. An output device **315** can include a diffuser **316**, an additional collimating lens **318**, a “goes before optics” (GOBO) **322**, and a projection lens **326**. The diffuser **316** can be formed of a sheet, plastic, glass or a combination thereof. The diffuser **316** can be in the form of a wafer, a disc, a sheet, or a rectangular solid. The diffuser **316** can evenly disburse the focused light beam **313** across its area.

The additional collimating lens **318** can be spaced away from the diffuser **316**, by a gap **320**, that allows the diffuser to expand the focused light beam **313** to the size of the additional collimating lens **318**. The additional collimating lens **318** can be fabricated from glass, plastic, quartz, silicon glass, or the like. The additional collimating lens **318** can homogenize the focused light beam **313** across its surface area as a homogenized light beam **321**. The additional collimating lens **318** can be formed to be the same size as the “goes before optics” (GOBO) **322**. The GOBO **322** can be a sheet, a wheel, a box, or a combination thereof having cutout patterns to pass a portion of the homogenized light beam **321** as a GOBO output **324**, such as a patterned high intensity light. The GOBO output **324** can be optically coupled to the projection lens **326** for display of the GOBO output **324** on a screen or surface (not shown).

It has been discovered that by placing the additional collimating lens **318** at a distance from the diffuser **316**, the illumination system **300** can support larger apertures for the GOBO **322** without losing intensity of the GOBO output **324** at the edges. The even distribution of the homogenized light beam **321** can use the light source **304**, where prior systems would need multiple light sources and still have difficulty providing even lighting through the GOBO **322**.

Referring now to FIG. 4, therein is shown an example of a functional block diagram of an illumination system **400** in an alternative embodiment. The functional block diagram of the illumination system **400** depicts an input device **402** including a source light emitting diode (LED) **404** mounted on a light source heat sink **406**. A phosphor layer **408** can be formed on or over the source LED **404**. The phosphor layer **408** can be a single-crystalline structure or a phosphor impregnated structure, such as glass, ceramic, plastic, or the like, formed of a reactive material for producing a white light when activated. The phosphor layer **408** can be either directly deposited on the source LED **404** or mounted as a glass, ceramic, or crystal phosphor plate placed over the source LED **404** with a small distance (not shown) between the source LED **404** and the phosphor layer **408**. A luminescent light beam **410** can emanate from the phosphor layer **408** when it is activated by the source LED **404**.

The luminescent light beam **410** can pass through a coupling lens **412** and a collimating lens **414** to evenly distribute the pattern of light from the phosphor layer **408**. A laser source **416** can be mounted on a laser heat sink **418**. A laser collimating lens **419** can be positioned on or adjacent to the laser source **416**. The laser collimating lens **419** can be formed of glass, plastic, quartz, polysilicon glass, or the like. The laser source **416** can be a single laser diode or an array of the laser diodes for generating a laser pumping light beam **420** when the laser source **416** is activated. The laser pumping light beam **420** can be a blue laser light that can be reflected from a blue reflecting filter **422**. The blue reflecting filter **422** can include a glass plate, plastic or film coated with a dichroic film to reflect the blue color of the laser pumping light beam **420** but pass other colors of light. The blue reflecting filter **422** can reflect the laser pumping light beam **420** onto the surface of the phosphor layer **408** in order to generate additional intensity in the luminescent light beam **410**.

The luminescent light beam **410** can be projected into a focusing lens **424**. The focusing lens **424** can be formed of glass, plastic, quartz, polysilicon glass, or the like, for converging the luminescent light beam **410** from the collimating lens **414**. In one embodiment, the output can terminate at the output plane **446** as an output parallel beam. In another embodiment, the focusing lens **424** can have a fixed focal length, taking the parallel beam from the collimating lens **414**, terminates at the output plane **456** as an output converging beam and focuses the beam onto the focal plane **426** at a distance from the focusing lens **424** outside the system output plane **456**. An output device **427** can include an additional collimating lens **432**, and a digital micromirror device (DMD) **434**. The projected light beam **430** can pass through the additional collimating lens **432**. The additional collimating lens **432** can be fabricated from glass, plastic, quartz, silicon glass, or the like, for projecting the projected light beam **430** onto the digital micromirror device (DMD) **434** for displaying an image **436** of the projected light beam **430**.

It has been discovered that the illumination system **400** can provide a multi-stage illumination system by selectively activating the laser source **416** for generating the laser

pumping light **420**. It is understood that the laser pumping light beam **420** is a narrow beam of laser light, but could be expanded by using a larger one of the blue reflecting filter **422** or by providing a larger geometry for the laser source **416**. By using the small geometry for the laser source **416** and the blue reflecting filter **422**, a hot spot (not shown) can be created in the central portion of the luminescent light beam **410** having additional brightness only where the laser pumping light beam **420** is reflected onto the phosphor layer **408**. This can be useful in certain applications or for display functions where a central item is highlighted by the additional brightness of the hot spot while the surrounding items are less brightly lit such as, for example, in applications to spot lights, dynamic displays, search lights, or vehicle lighting systems (which may or may not use DMDs).

Referring now to FIG. 5, therein is shown an example of the image **436** of the projected light beam **430** as seen on the digital micromirror device (DMD) **434** of FIG. 4. The example of the image **436** depicts view of the digital micromirror device (DMD) showing the image of the incident projected light beam **430**.

The left side image (A) shows the image **436** without the laser source **416** of FIG. 4 being activated. The illumination density is dispersed evenly across the entire surface of the DMD **434**. When the laser source **416** is activated as a narrow beam of the laser pumping light beam **420** of FIG. 4, a hot spot **502** can be seen aligned on the centerline of the DMD **434**. The hot spot **502** can be an area of increased intensity that is displayed as a brighter spot in the DMD **434**. It is understood that the size and position of the hot spot **502** can be controlled by changing the position or size of the blue reflecting filter **422** and the size of the laser beam **420** of FIG. 4 to control how wide the laser pumping light beam **420** is when it contacts the DMD **434**. This can be useful in entertainment spot lights, dynamic displays, search lights, or vehicle lighting systems.

Referring now to FIG. 6, therein is shown is an example of an intensity distribution profile **601** of the output beam **154** of FIG. 1. The intensity distribution profile **601** can have an output angle **602** showing a presentation angle from an optical centerline **604** of the illumination system **100** of FIG. 1. The output angle **602** can increase either side of the optical centerline **604**. The optical centerline **604** indicated by **[0,0]** shows a strong intensity with a slow increase as the angle from the optical centerline **604** increases to a maximum angle **606**. By way of an example, a centerline intensity **608** can mark the bright center of the output angle **602**. As the output angle **602** increases, an additional intensity **610** gets larger. This is compared to prior illumination systems (not shown) that provide their maximum intensity at the optical centerline **604** and provides a diminishing intensity as the output angle **602** increases. The intensity distribution profile **601** can be the results of diffusers **216** in FIGS. 2 and **316** in FIG. 3. With such diffusers with higher output at higher angles, the resulting projected intensity at the screen with the projected image (not shown) will not have corners and edges with lower intensity as the extra projection at the larger angle will compensate the longer projection distances of the corners and edges from the projection lens. The spacing of the light pipe **150** from the focusing lens **132** and the GOBO **152** can be adjusted to produce an optimal intensity of the hot spot **502** and intensity distribution profile **601** for the specific applications noted. Prior art illumination systems would not be able to maintain the illumination intensity across the full screen.

Referring now to FIG. 7, therein is shown a flow chart of a method **700** of operation of an illumination system **100** in

an embodiment of the present invention. The method **700** includes: generating a luminescent light beam by an input device in a block **702**; projecting a pumping light beam into the input device in a block **704**; focusing the luminescent light beam enhanced by the pumping light beam as an output beam in a block **706**; receiving the output beam by an output device in a block **708**; and projecting an application output, formed with the output beam, from a projection device in a block **710**.

The resulting method, process, apparatus, device, product, and/or system is straightforward, cost-effective, uncomplicated, highly versatile, accurate, sensitive, and effective, and can be implemented by adapting known components for ready, efficient, and economical manufacturing, application, and utilization. Another important aspect of an embodiment of the present invention is that it valuably supports and services the historical trend of reducing costs, simplifying systems, and increasing performance.

These and other valuable aspects of an embodiment of the present invention consequently further the state of the technology to at least the next level.

While the invention has been described in conjunction with a specific best mode, it is to be understood that many alternatives, modifications, and variations will be apparent to those skilled in the art in light of the foregoing description. Accordingly, it is intended to embrace all such alternatives, modifications, and variations that fall within the scope of the included claims. All matters set forth herein or shown in the accompanying drawings are to be interpreted in an illustrative and non-limiting sense.

What is claimed is:

1. An illumination system comprising:

an input device, wherein the input device includes:

a phosphor layer having a first input face and a second input face, and

a first activation-light source optically coupled to direct activation light into the first input face of the phosphor layer to generate a first luminescent light beam;

a first pumping assembly, optically coupled to the input device, configured to generate a pumping light beam;

a first wavelength-selective reflector filter, wherein the first wavelength-selective reflector filter is configured to optically couple the pumping light beam into the second input face of the phosphor layer of the input device, and wherein the first wavelength-selective reflector filter is configured to output the first luminescent light beam;

a focusing lens, aligned with the first luminescent light beam, to focus the first luminescent light beam enhanced by the pumping light beam as an output beam; and

an output device, optically coupled to the focusing lens, configured to:

receive the output beam from the focusing lens, and project an application output, formed with the output beam, from a projection device.

2. The system as claimed in claim 1, further comprising: a second input device, optically coupled to the focusing lens, configured to generate a second luminescent light beam;

a second wavelength-selective reflector filter in an optical path between the second input device and the focusing lens, configured to reflect the second luminescent light beam into the output device; and

a second pumping assembly, optically coupled to the second input device, configured to project a second

- pumping light beam through the second wavelength-selective reflector filter and into the second input device.
3. The system as claimed in claim 1, wherein: the output device is further configured to diffuse the output beam including a light pipe configured to receive the output beam and diffuse the output beam to match an application size.
4. The system as claimed in claim 1 further comprising: a third input device, optically coupled to the focusing lens, configured to generate a third luminescent light beam; and a third wavelength-selective reflector filter in an optical path between the third input device and the focusing lens, configured to reflect the third luminescent light beam to be parallel with and in the same direction as the first luminescent light beam.
5. The system as claimed in claim 1 wherein the output device includes: an additional collimating lens configured to evenly distribute the projected light beam; and a digital micromirror device (DMD) configured to display an image of the projected light beam.
6. The system as claimed in claim 1, the first pumping assembly further comprising: a laser source optically coupled to the input device; a collimating lens, adjacent to the laser source, configured to form a laser pumping light beam; and wherein the first wavelength-selective filter is optically between the laser source and the input device, and is configured to reflect the laser pumping light beam into the input device to create a hot spot.
7. The system as claimed in claim 1 wherein the first activation-light source includes: a laser optically coupled to the first input face of the phosphor layer, and wherein the input device further includes: a coupling lens, aligned with the first light source, configured to diffuse the first luminescent light beam; and a collimating lens, aligned with the diffuser lens, configured to project the first luminescent light beam to the focusing lens.
8. The system as claimed in claim 1, wherein the first activation light source includes: a source light emitting diode (LED), mounted on a light source heat sink, configured to cool the source LED, and wherein the phosphor layer is adjacent to the source LED and is configured to produce the first luminescent light beam when the source LED activates the phosphor layer, wherein the first pumping assembly is configured to generate a laser pumping light beam; and a collimating lens configured to transfer the laser pumping light beam to the phosphor layer and project the first luminescent light beam from the phosphor layer including a hot spot when activated by the laser pumping light beam.
9. The system as claimed in claim 1 wherein the output device includes a diffuser configured to provide a centerline intensity and an additional intensity that increases with an increase in an output angle.
10. An illumination system comprising: an input device configured to generate a first luminescent light beam; a pumping assembly, optically coupled to the input device, configured to project a pumping light beam into the input device;

- a focusing lens, aligned with the first luminescent light beam, to focus the first luminescent light beam enhanced by the pumping light beam as an output beam; and an output device, optically coupled to the focusing lens, configured to: receive the output beam from the focusing lens, and project an application output, formed with the output beam, from a projection device, wherein: the input device includes a light source, optically coupled to a diffuser lens and a collimating lens, configured to generate a high intensity light beam; and the output device includes: a diffuser configured to receive the high intensity light beam, a “goes before optics” (GOBO), spaced away from the diffuser by a gap, configured to generate a GOBO output from the high intensity light beam; and a projection lens, aligned with the GOBO, configured to project the GOBO output.
11. An illumination system comprising: an input device configured to generate a first luminescent light beam; a pumping assembly, optically coupled to the input device, configured to project a pumping light beam into the input device; a focusing lens, aligned with the first luminescent light beam, to focus the first luminescent light beam enhanced by the pumping light beam as an output beam; and an output device, optically coupled to the focusing lens, configured to: receive the output beam from the focusing lens, and project an application output, formed with the output beam, from a projection device, wherein the output device includes: a diffuser configured to receive a focused light beam from the focus lens; an additional collimating lens configured to generate a homogenized light beam from the focused light beam; a “goes before optics” (GOBO), spaced away from the additional collimating lens, configured to generate a GOBO output from the homogenized light beam; and a projection lens, optically coupled to the GOBO, configured to project the GOBO output.
12. A method for operating an illumination system comprising: generating a first luminescent light beam by an input device, wherein the input device includes: a phosphor layer having a first input face and a second input face, and a first activation-light source optically coupled to direct activation light into the first input face of the phosphor layer to generate the first luminescent light beam; projecting a pumping light beam into the second input face of the phosphor layer of the input device via a first wavelength-selective filter and outputting the first luminescent light beam via the first wavelength-selective filter; focusing the first luminescent light beam enhanced by the pumping light beam as an output beam; receiving the output beam by an output device; and projecting an application output, formed with the output beam, from a projection device.
13. The method as claimed in claim 12 further comprising:

11

generating a second luminescent light beam;
 reflecting the second luminescent light beam from a
 second wavelength-selective reflective filter into the
 output device; and
 projecting a second pumping light beam through the
 second wavelength-selective reflective filter and into
 the second input device.

14. The method as claimed in claim 12 wherein receiving
 the output beam by the output device includes diffusing the
 output beam to match an application size.

15. The method as claimed in claim 12 further comprising
 generating a third luminescent light beam and reflecting the
 third luminescent light beam to be parallel with and in the
 same direction as the first luminescent light beam.

16. The method as claimed in claim 12 further compris-
 ing:

producing a projected light beam;
 evenly distributing the projected light beam; and
 displaying an image of the projected light beam on a
 digital micromirror device (DMD).

17. The method as claimed in claim 12, the projecting of
 the pumping light beam further comprising:

forming a laser pumping light beam by a collimating lens
 adjacent to a laser source; and

optically coupling the laser pumping light beam into the
 second input face of the phosphor layer of the input
 device to create a hot spot.

18. The method as claimed in claim 12 further compris-
 ing:

generating the first luminescent light beam by a laser
 optically coupled to the phosphor layer; and
 projecting the first luminescent light beam to a focusing
 lens.

19. The method as claimed in claim 12, wherein the first
 activation-light source includes a source LED, the method
 further comprising:

mounting the source LED on a light source heat sink;
 producing the first luminescent light beam by the source
 LED activating the phosphor layer; and

projecting the first luminescent light beam from the
 phosphor layer including a hot spot that is generated
 when transferring a laser pumping light beam to the
 phosphor layer.

20. The method as claimed in claim 12 further comprising
 providing a centerline intensity and an additional intensity
 that increases with an increase in an output angle.

21. A method for operating an illumination system compris-
 ing:

generating a luminescent light beam by an input device;
 projecting a pumping light beam into the input device;
 focusing a first luminescent light beam enhanced by the
 pumping light beam as an output beam;
 receiving the output beam by an output device;
 projecting an application output, formed with the output
 beam, from a projection device;

12

generating a high intensity light beam by optically cou-
 pling a light source through a diffuser lens and a
 collimating lens;

receiving the high intensity light beam by a diffuser;
 generating a GOBO output from the high intensity light
 beam; and

projecting the GOBO output through a projecting lens.

22. A method for operating an illumination system compris-
 ing:

generating a luminescent light beam by an input device;
 projecting a pumping light beam into the input device;
 focusing a first luminescent light beam enhanced by the
 pumping light beam as an output beam;

receiving the output beam by an output device;
 projecting an application output, formed with the output
 beam, from a projection device;

receiving a focused light beam from a focus lens;
 generating a homogenized light beam from the focused
 light beam;

generating a GOBO output from the homogenized light
 beam; and

project the GOBO output through a projection lens.

23. An illumination system comprising:

a phosphor layer having a first input face and a second
 input face, and configured to generate a first lumines-
 cent light beam;

a first activation-light source optically coupled to direct
 activation light into the first input face of the phosphor
 layer;

a first pumping source that generates a pumping laser
 beam; and

a wavelength-selective reflector, wherein the wavelength-
 selective reflector is configured to optically couple the
 pumping laser beam to the second input face of the
 phosphor layer, and wherein the wavelength-selective
 reflector is configured to output the first luminescent
 light beam.

24. The system of claim 23, further comprising:

a focusing lens, aligned to receive the first luminescent
 light beam and to focus the first luminescent light beam
 enhanced by the pumping laser beam as an intermediate
 output beam; and

a projection device, optically coupled to:
 receive the intermediate output beam from the focusing
 lens, and

project an application output beam.

25. The system of claim 23, wherein the phosphor layer
 is a glass, ceramic, or crystal phosphor plate.

26. The system of claim 23, wherein the phosphor layer
 is formed on the first activation-light source.

27. The system of claim 23, wherein the activation-light
 source is a light-emitting diode (LED).

* * * * *